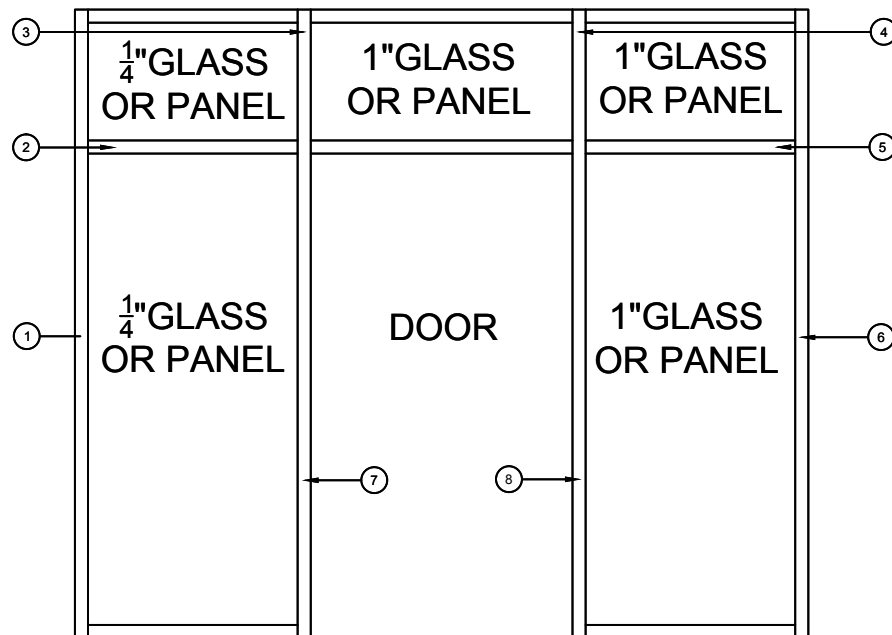
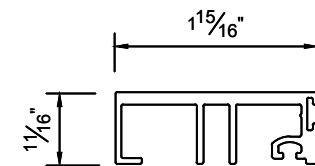


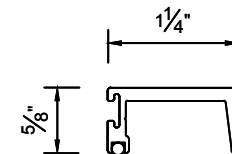
# VALE 2" X 5" FRAMING SYSTEMS WITH APPLIED STOPS



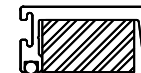
## LARGE DOOR STOP



## SMALL DOOR STOP



## SMALL DOOR STOP WITH REINFORCEMENT

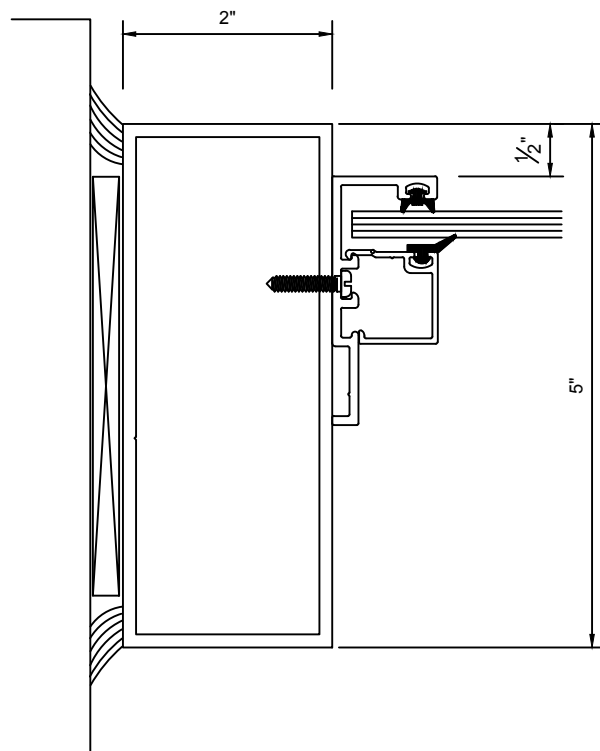


2" x 5" FRAMING SYSTEM WITH STOPS

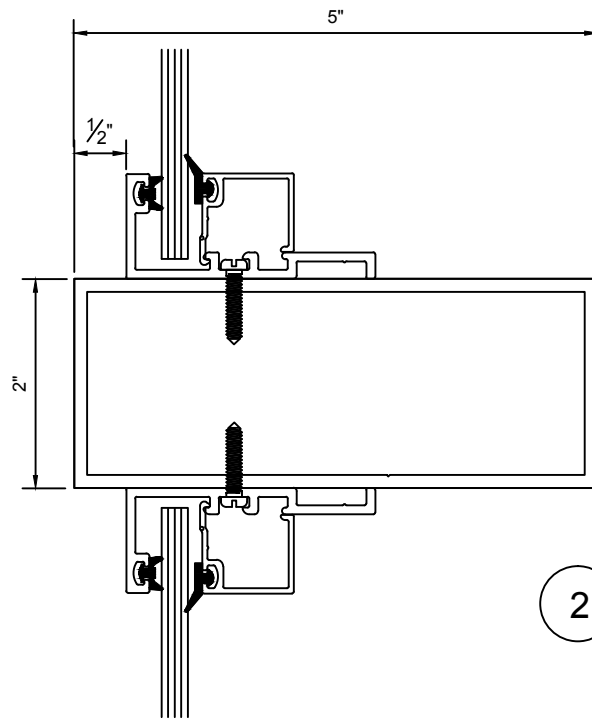
AVAILABLE DOOR STOPS

VALE DOORS 2012

ALLOY: 6063-T5



1



2

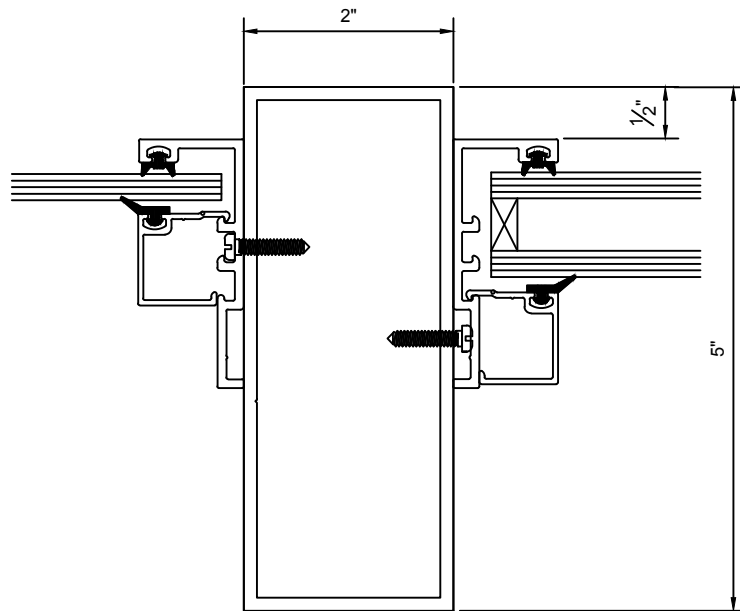
2" X 5" FRAMING SYSTEM

AVAILABLE GLASS STOPS

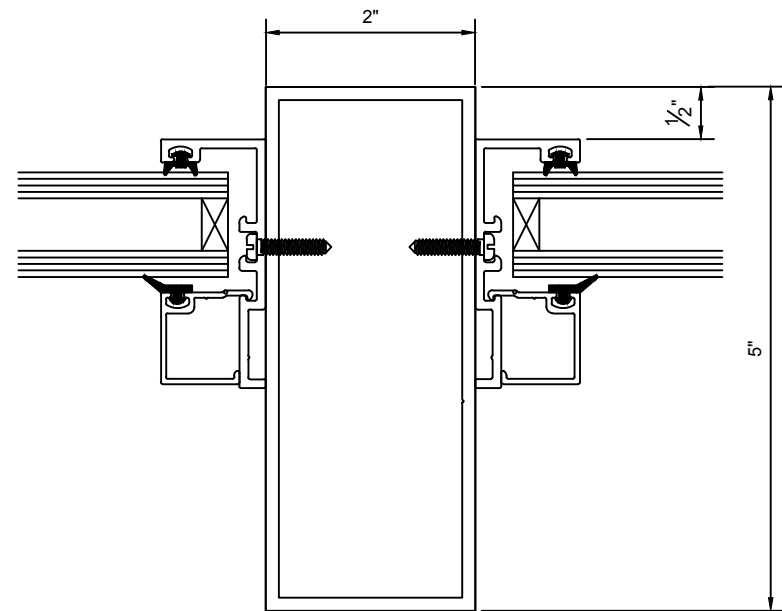
VALE DOORS 2012

CAULK BY OTHERS

SHIMS BY OTHERS



3

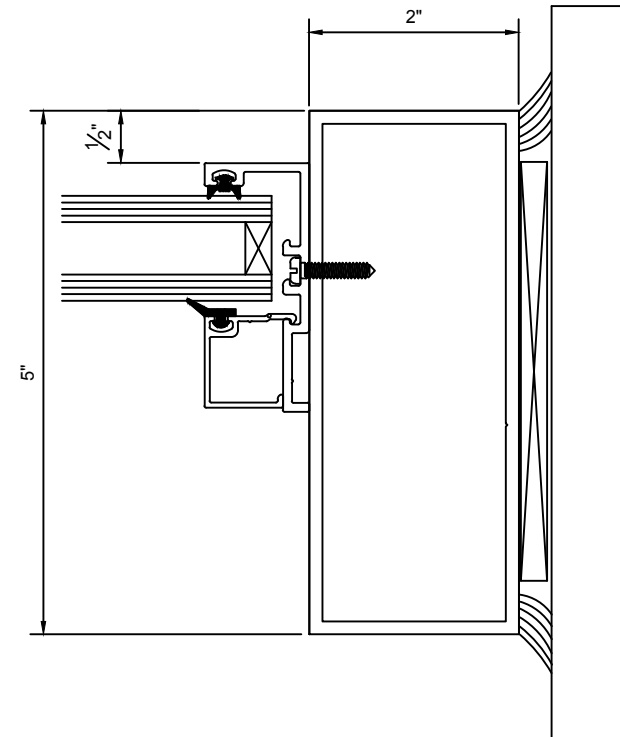
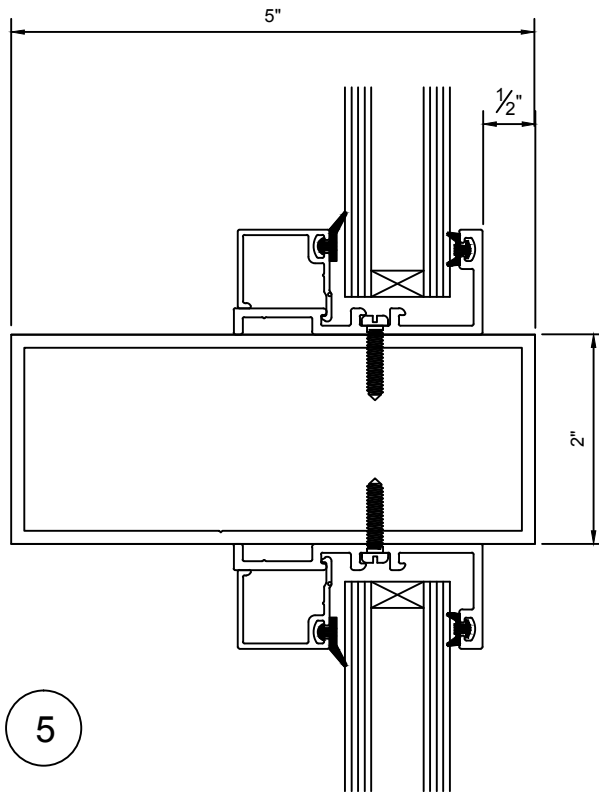


4

2" X 5" FRAMING SYSTEM

AVAILABLE GLASS STOPS

VALE DOORS 2012



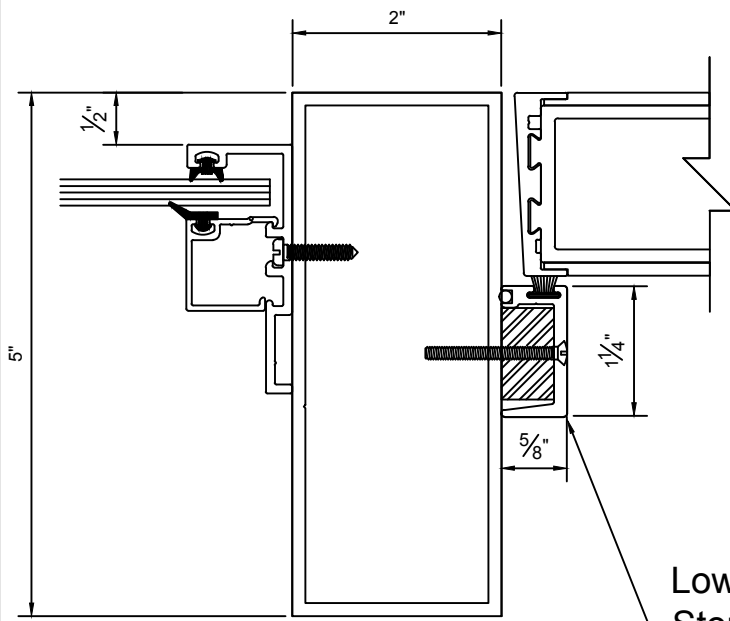
2" X 5" FRAMING SYSTEM WITH STOPS

AVAILABLE GLASS STOPS

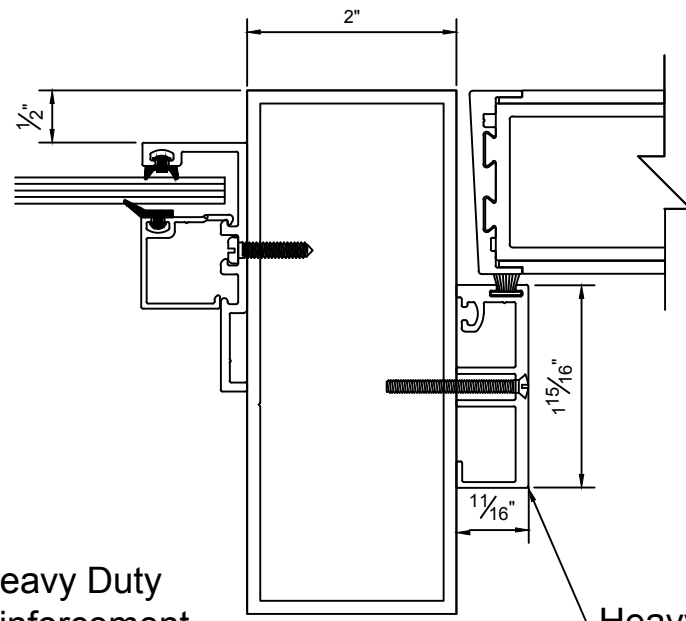
VALE DOORS 2012

CAULK BY OTHERS

SHIMS BY OTHERS



7



7

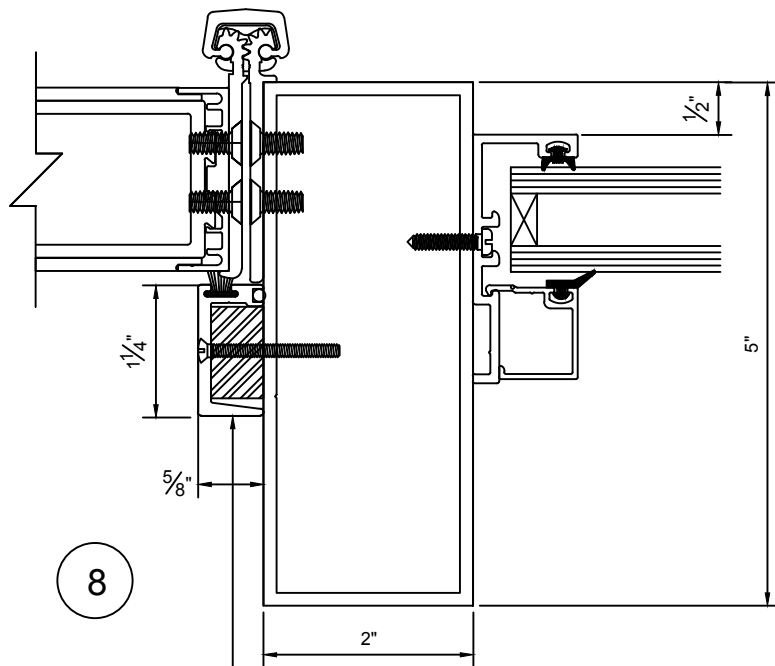
Low Profile Heavy Duty  
Stop With Reinforcement

Heavy Duty Stop

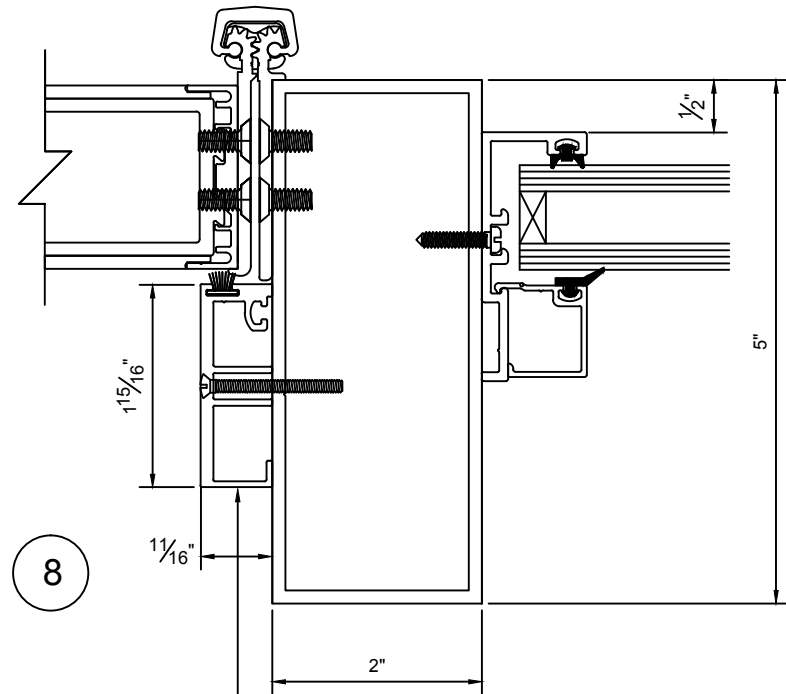
2" X 5" FRAMING SYSTEM WITH STOPS

AVAILABLE DOOR AND GLASS STOPS

VALE DOORS 2012



Low Profile Heavy Duty  
Stop With Reinforcement



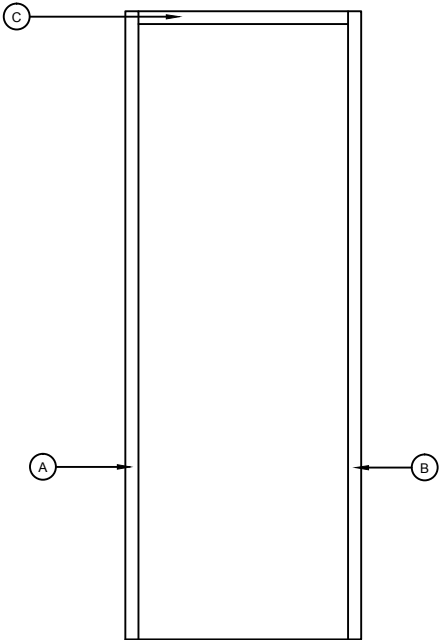
Heavy Duty Stop

2" X 5" FRAMING SYSTEM WITH STOPS

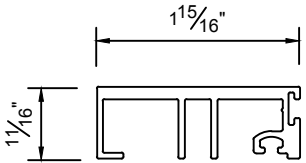
AVAILABLE DOOR AND GLASS STOPS

VALE DOORS 2012

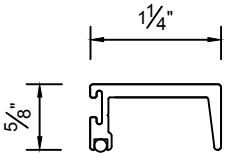
VALE 2" X 4-1/2" DOOR FRAME WITH APPLIED STOPS



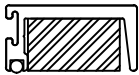
LARGE DOOR STOP



SMALL DOOR STOP



SMALL DOOR STOP  
WITH REINFORCEMENT

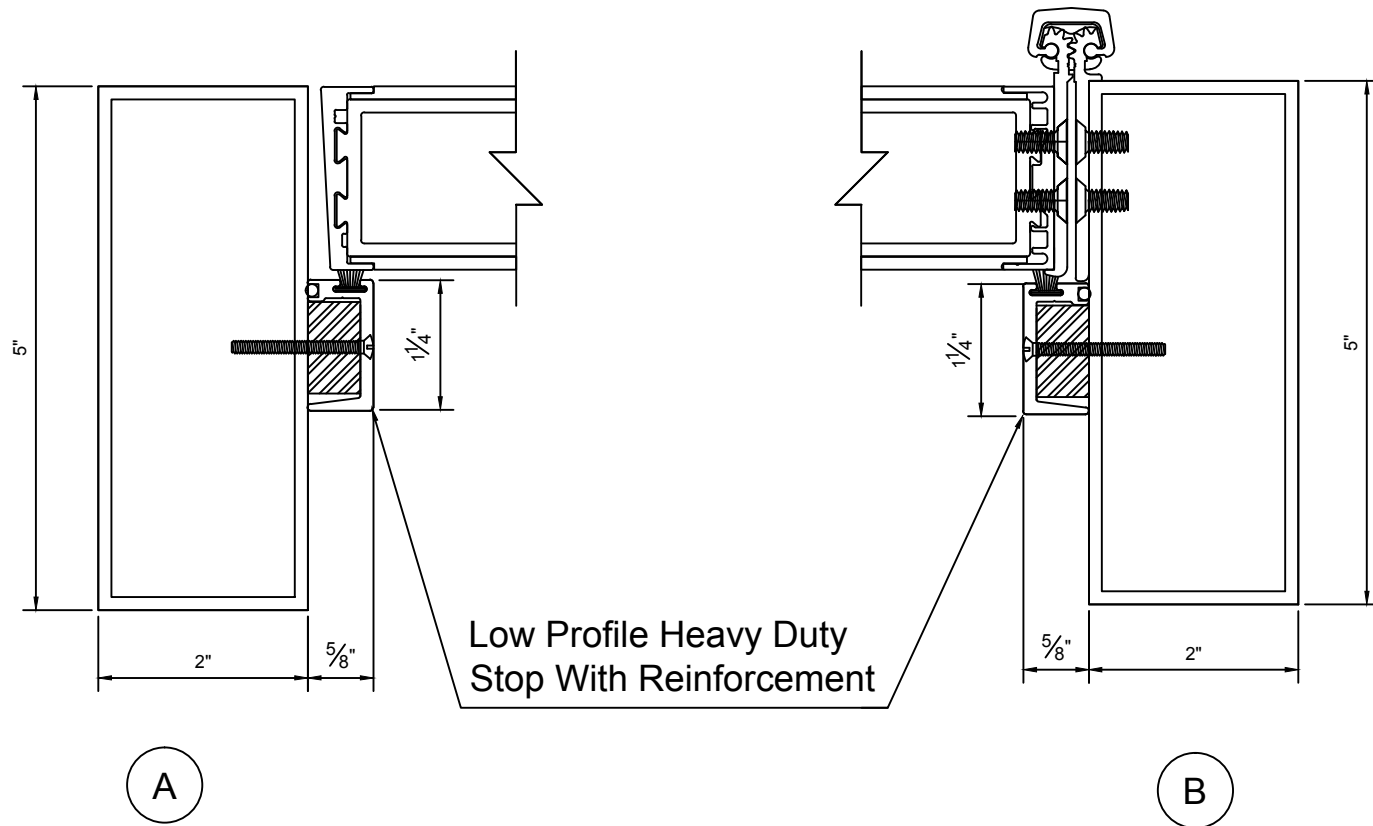


2" X 5" FRAMING SYSTEM WITH STOPS

AVAILABLE DOOR STOPS

VALE DOORS 2012

ALLOY: 6063-T5



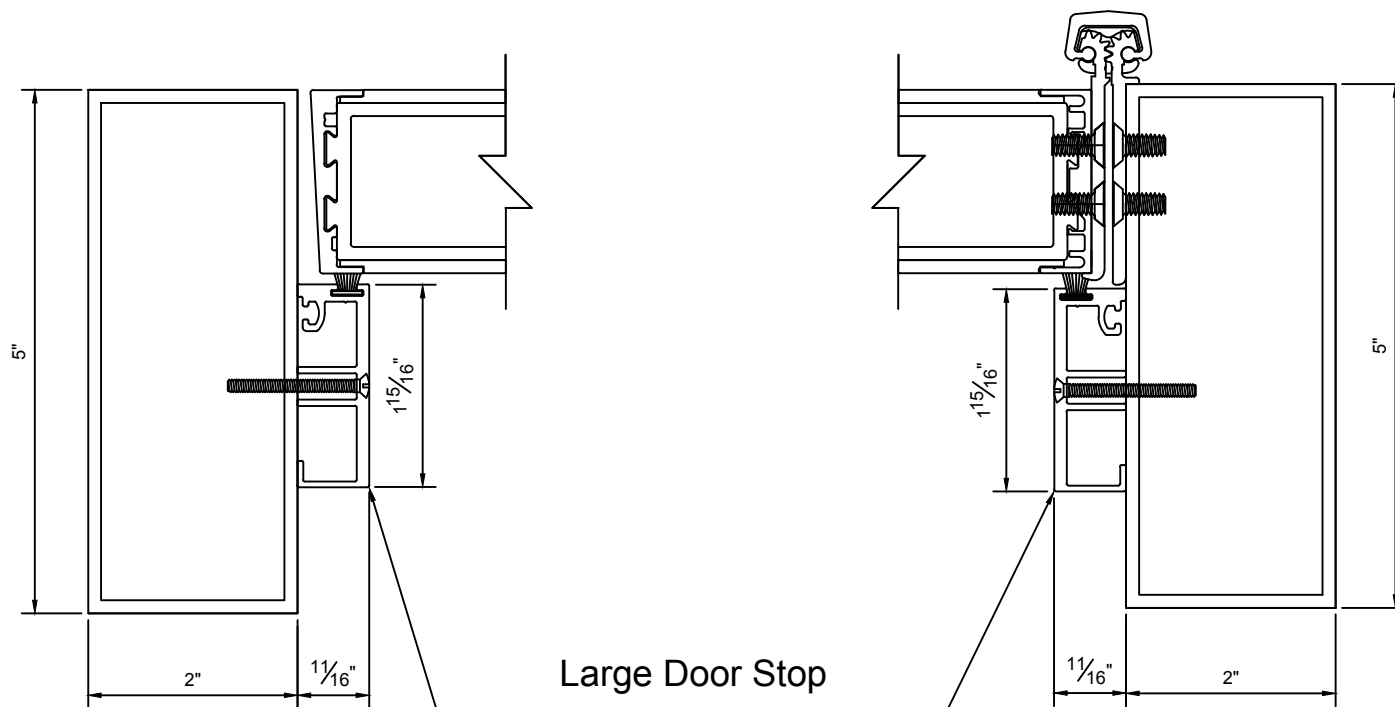
2" X 5" FRAMING SYSTEM WITH STOPS

LOW PROFILE HEAVY DUTY DOOR STOPS

VALE DOORS 2012

WITH SOLID ALUMINIUM REINFORCEMENT





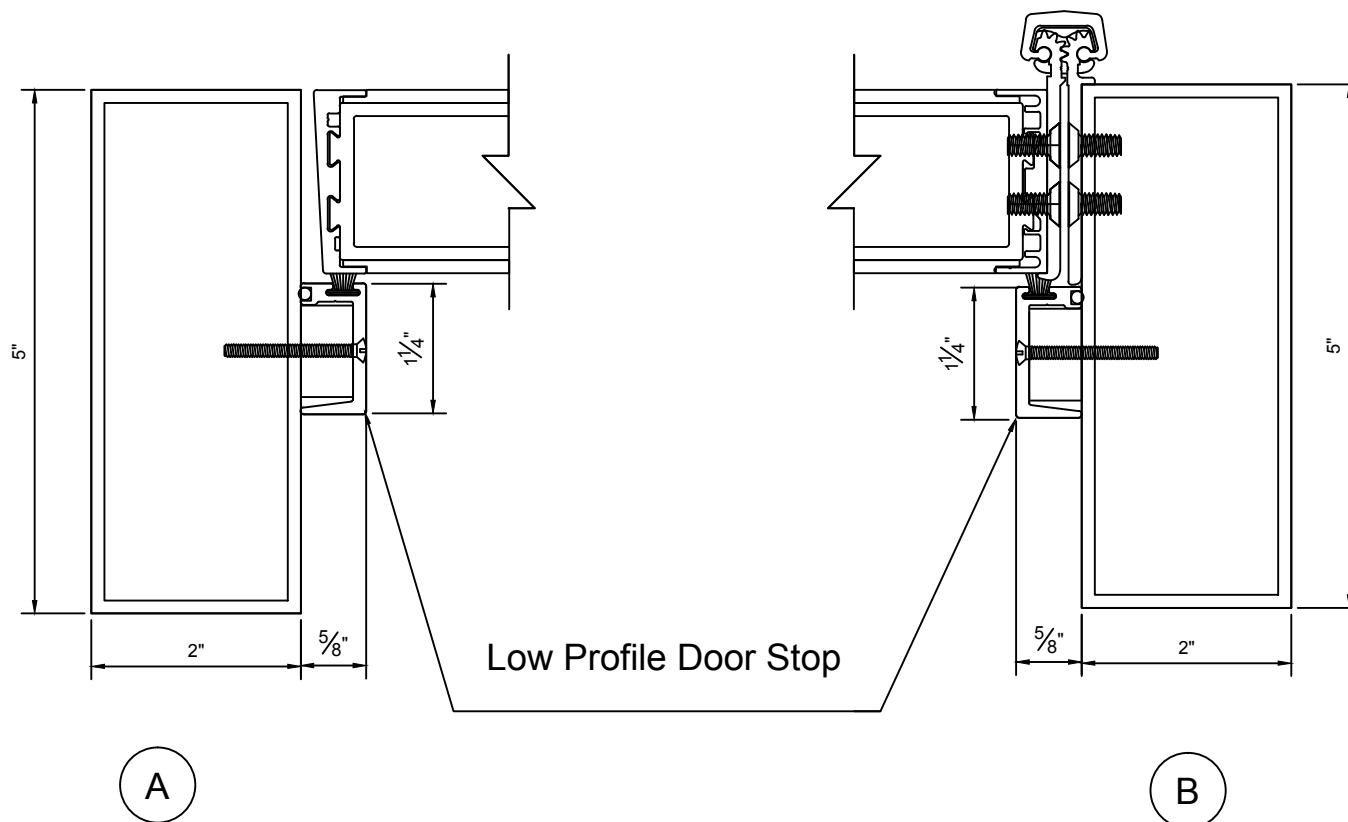
A

B

2" X 5" FRAMING SYSTEM WITH STOPS

LARGE PROFILE DOOR STOPS

VALE DOORS 2012

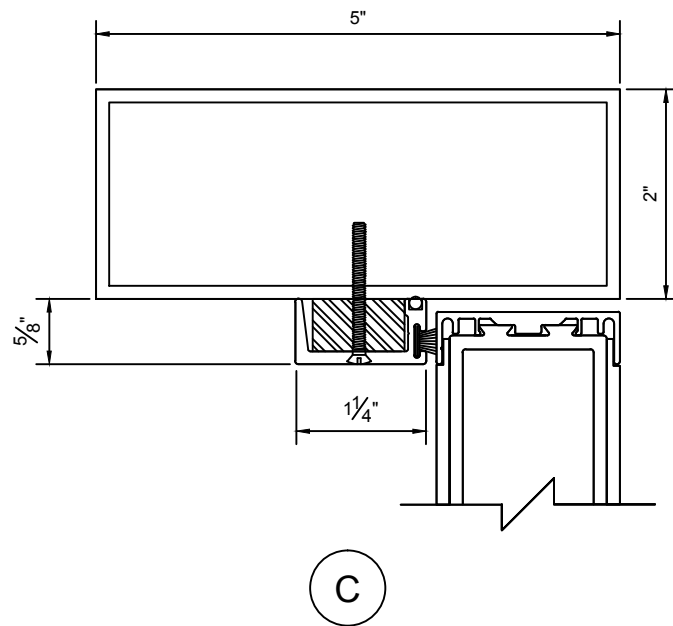


2" X 5" FRAMING SYSTEM WITH STOPS

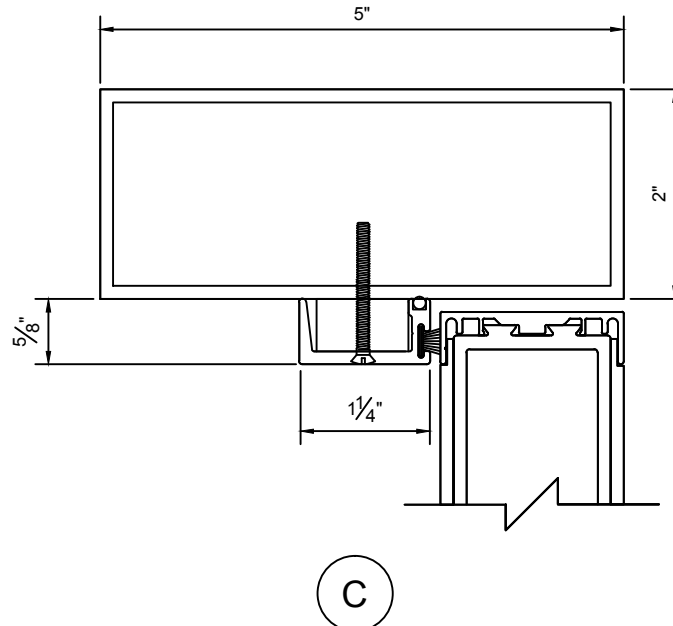
LOW PROFILE DOOR STOPS

VALE DOORS 2012

Low Profile Heavy Duty  
Stop With Reinforcement



Low Profile Heavy Duty Stop

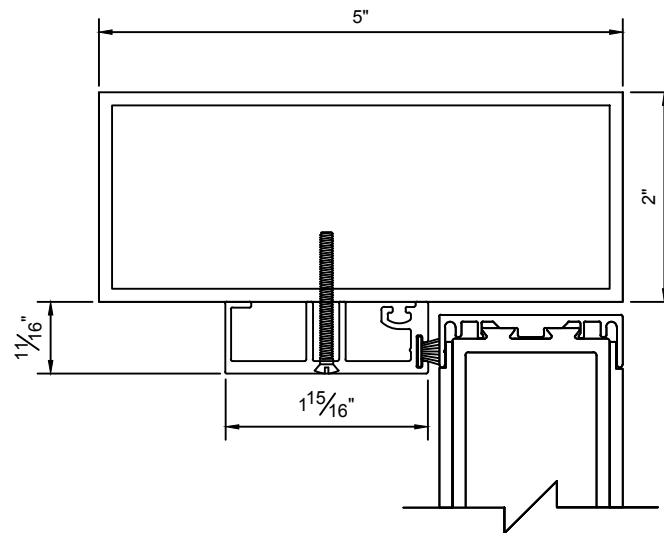


2" X 5" FRAMING SYSTEM WITH STOPS

LOW PROFILE DOOR STOPS

VALE DOORS 2010

# Large Profile Door Stop



C

2" X 5" FRAMING SYSTEM WITH STOPS

LARGE PROFILE DOOR STOPS

VALE DOORS 2012