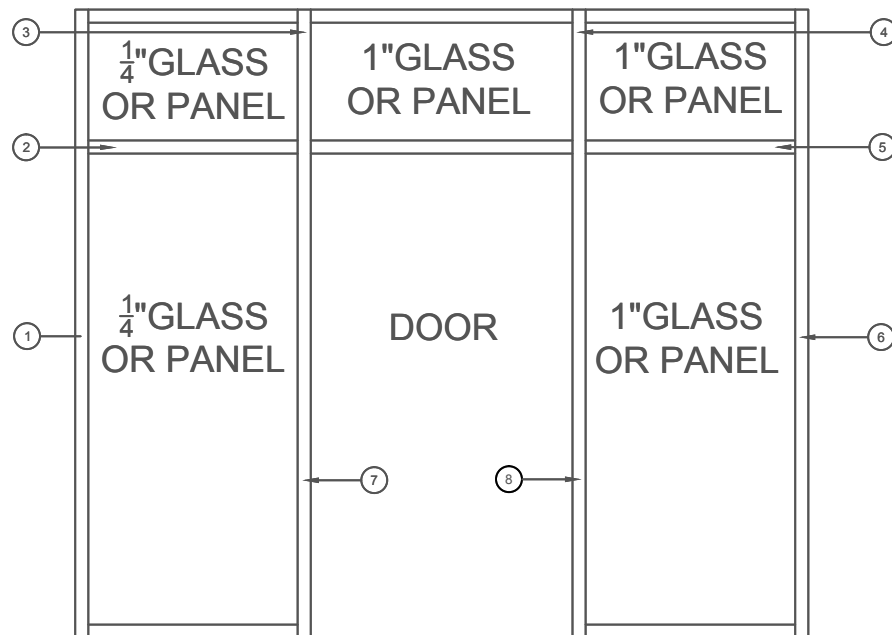
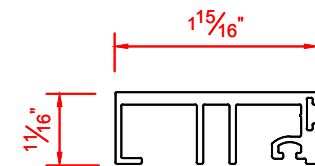


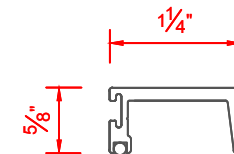
# VALE 2" X 6" FRAMING SYSTEMS WITH APPLIED STOPS



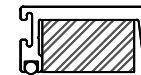
## LARGE DOOR STOP



## SMALL DOOR STOP



## SMALL DOOR STOP WITH REINFORCEMENT



2" x 6" FRAMING SYSTEM WITH STOPS

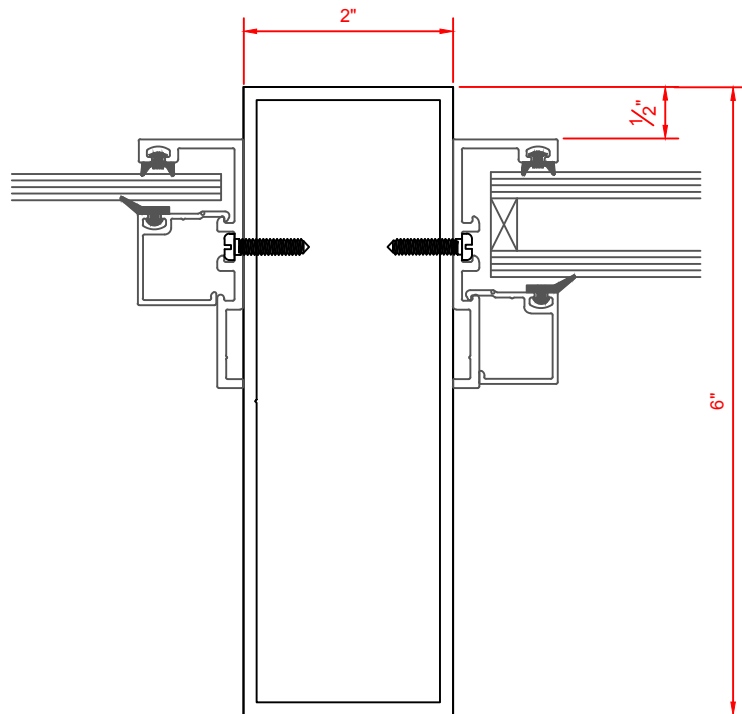
AVAILABLE DOOR STOPS

VALE DOORS 2012

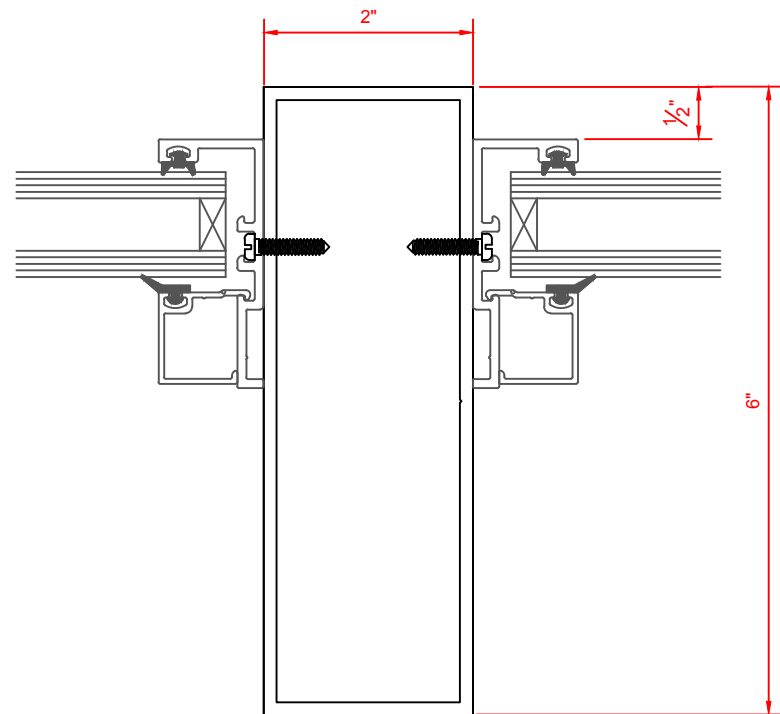
ALLOY: 6063-T5



2" X 6" FRAMING SYSTEM		AVAILABLE GLASS STOPS	
VALE DOORS 2012	CAULK BY OTHERS	SHIMS BY OTHERS	



3

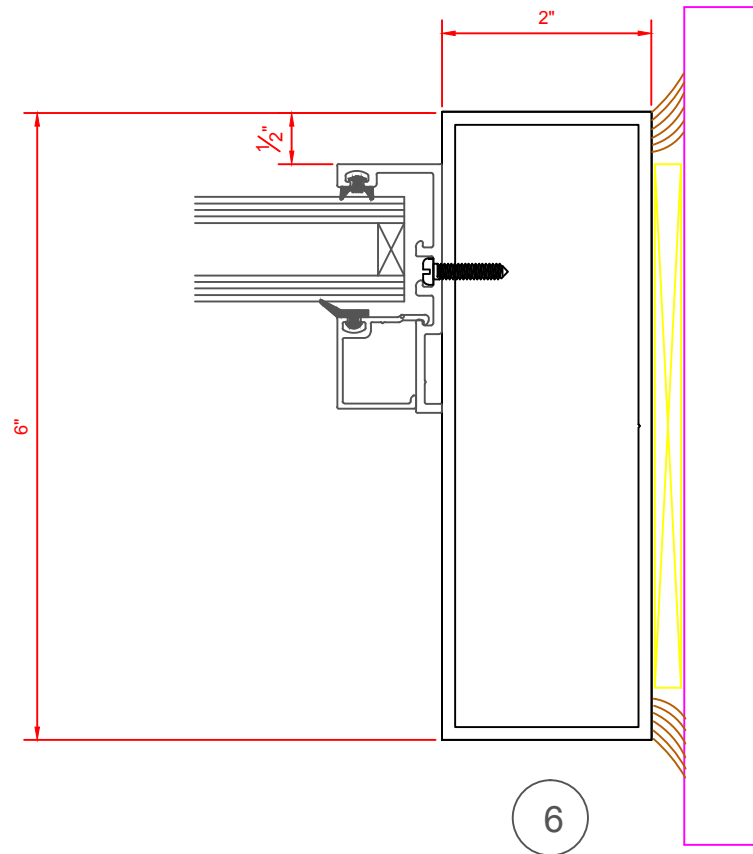
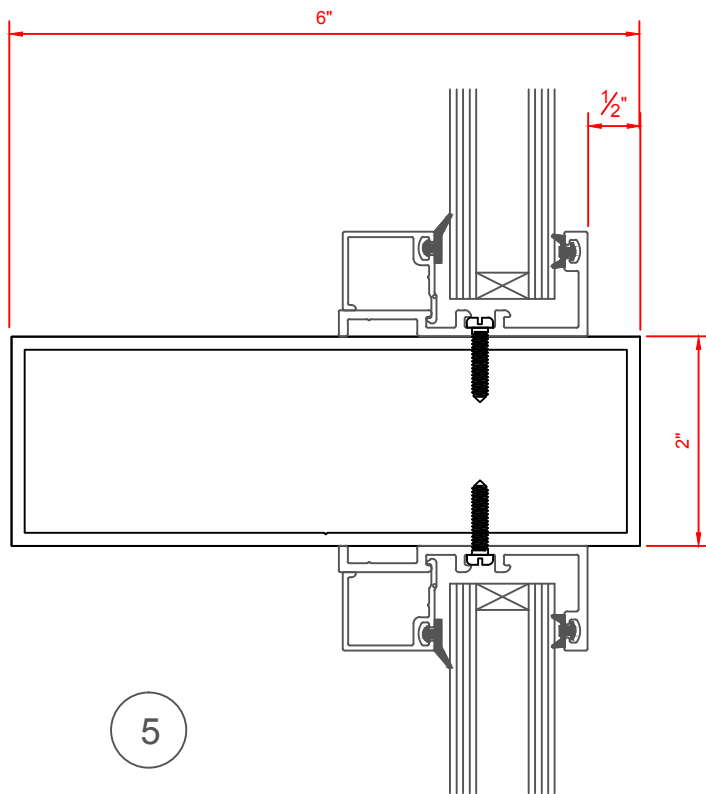


4

2" X 6" FRAMING SYSTEM

AVAILABLE GLASS STOPS

VALE DOORS 2012



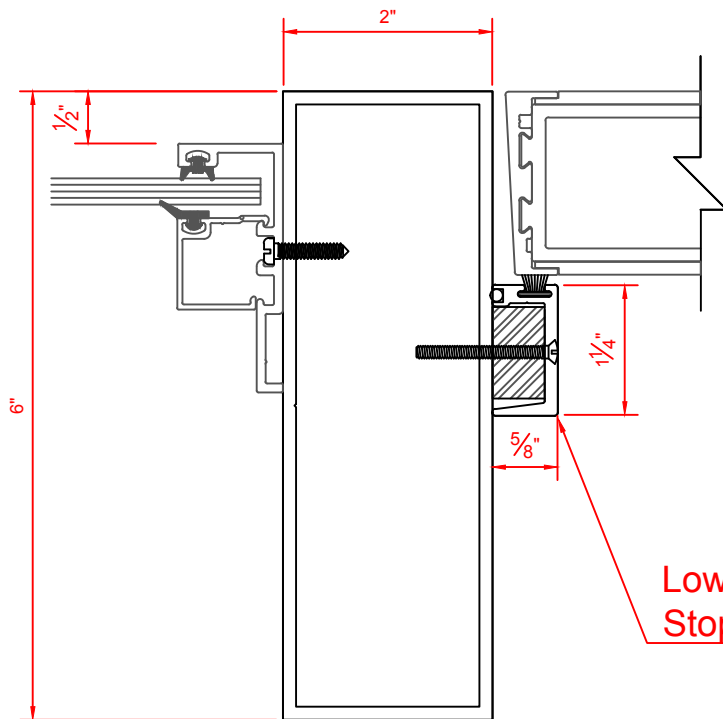
2" X 6" FRAMING SYSTEM WITH STOPS

AVAILABLE GLASS STOPS

VALE DOORS 2012

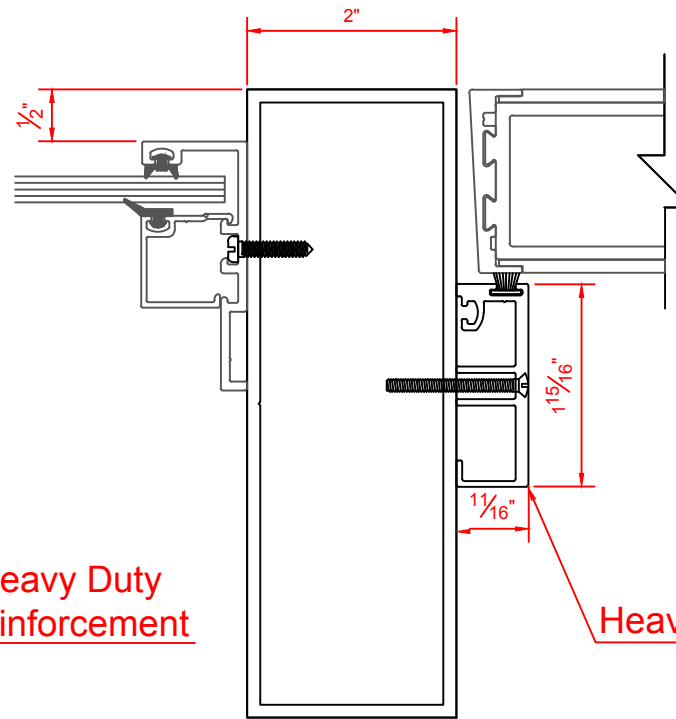
CAULK BY OTHERS

SHIMS BY OTHERS



Low Profile Heavy Duty  
Stop With Reinforcement

7



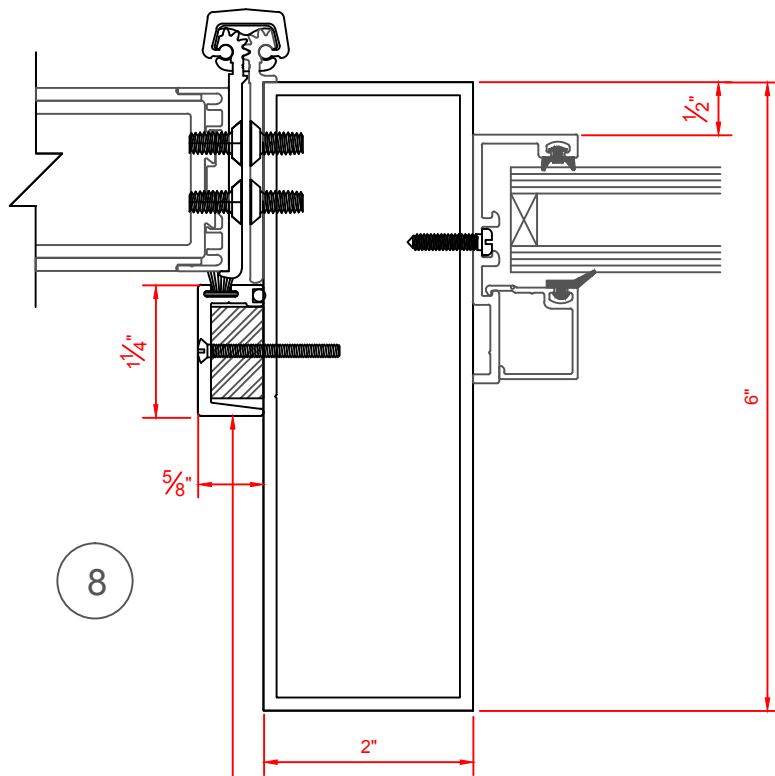
Heavy Duty Stop

7

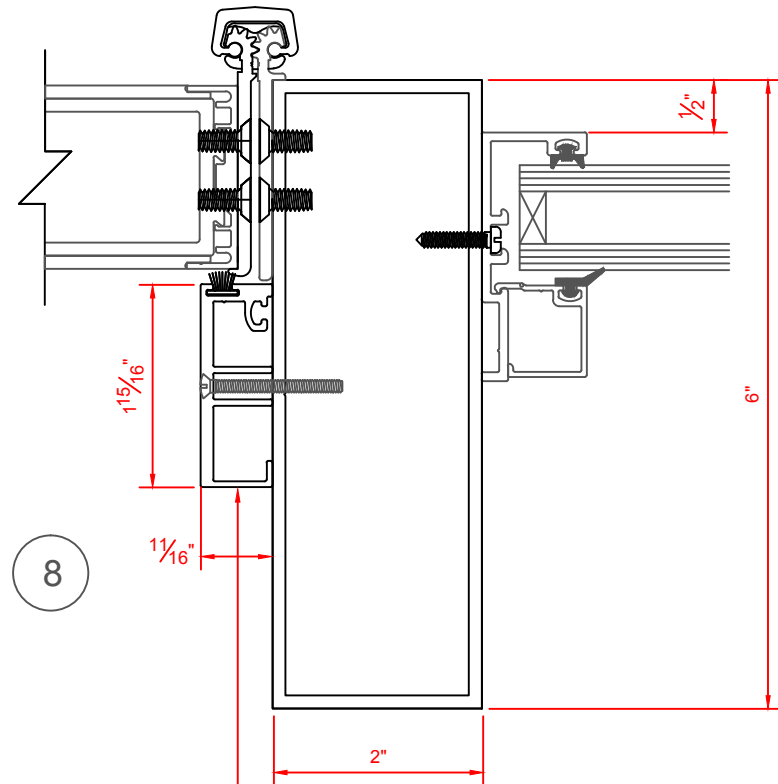
2" X 6" FRAMING SYSTEM WITH STOPS

AVAILABLE DOOR AND GLASS STOPS

VALE DOORS 2012



Low Profile Heavy Duty  
Stop With Reinforcement



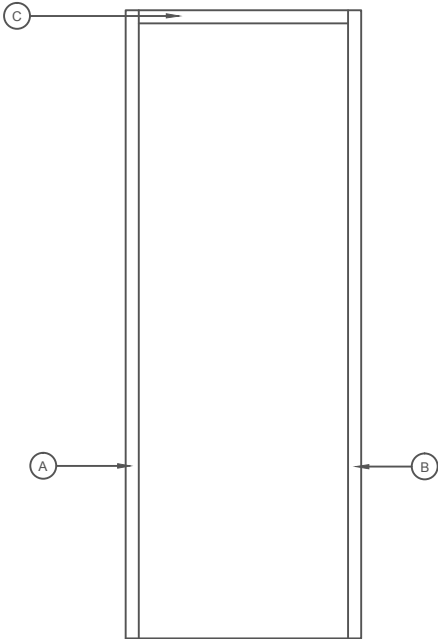
Heavy Duty Stop

2" X 6" FRAMING SYSTEM WITH STOPS

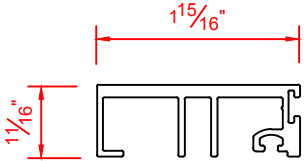
AVAILABLE DOOR AND GLASS STOPS

VALE DOORS 2012

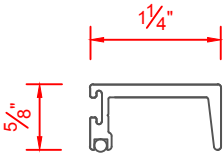
VALE 2" X 4-1/2" DOOR FRAME WITH APPLIED STOPS



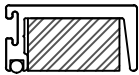
LARGE DOOR STOP



SMALL DOOR STOP



SMALL DOOR STOP WITH REINFORCEMENT

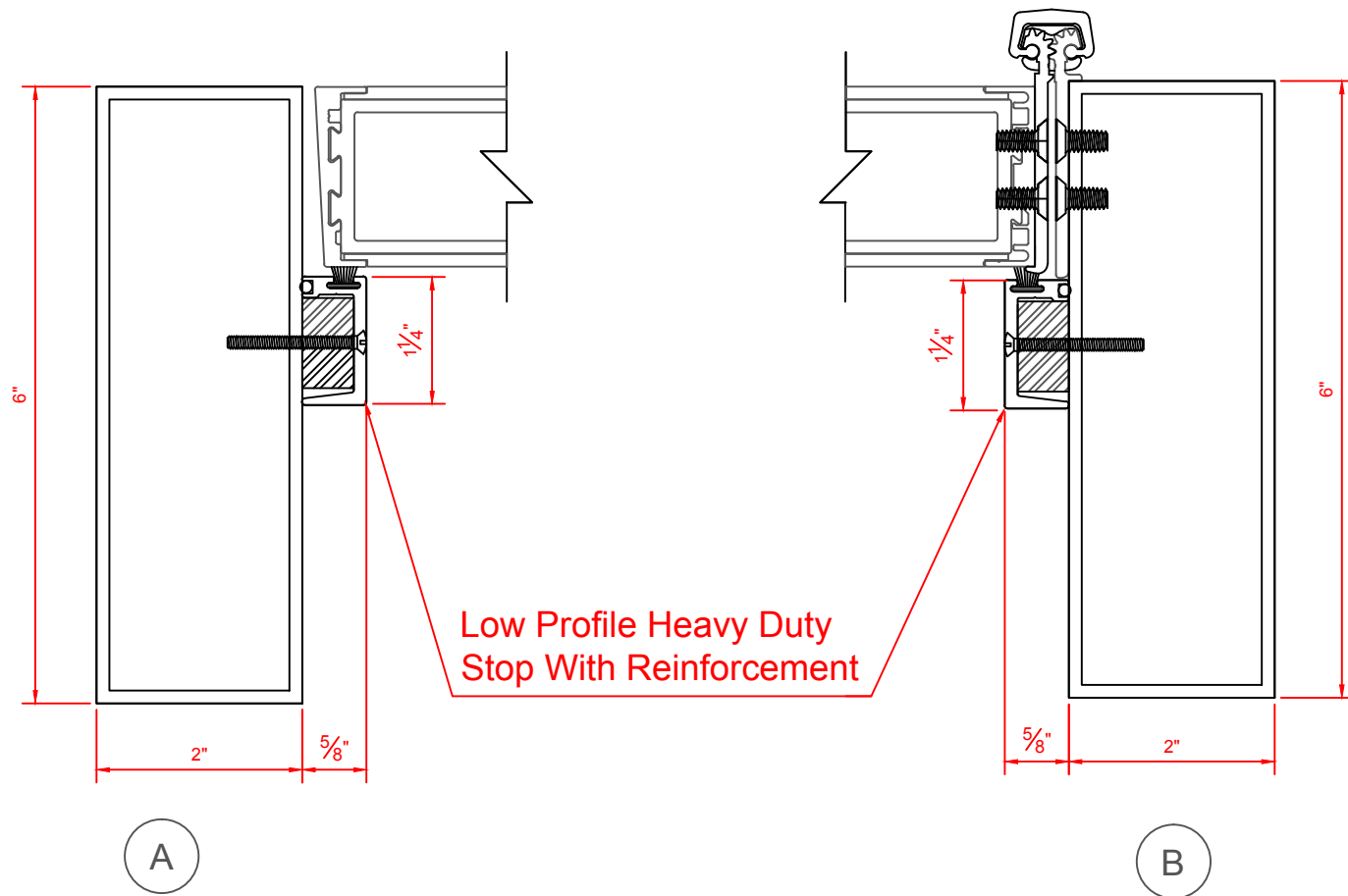


2" X 6" FRAMING SYSTEM WITH STOPS

AVAILABLE DOOR STOPS

VALE DOORS 2012

ALLOY: 6063-T5



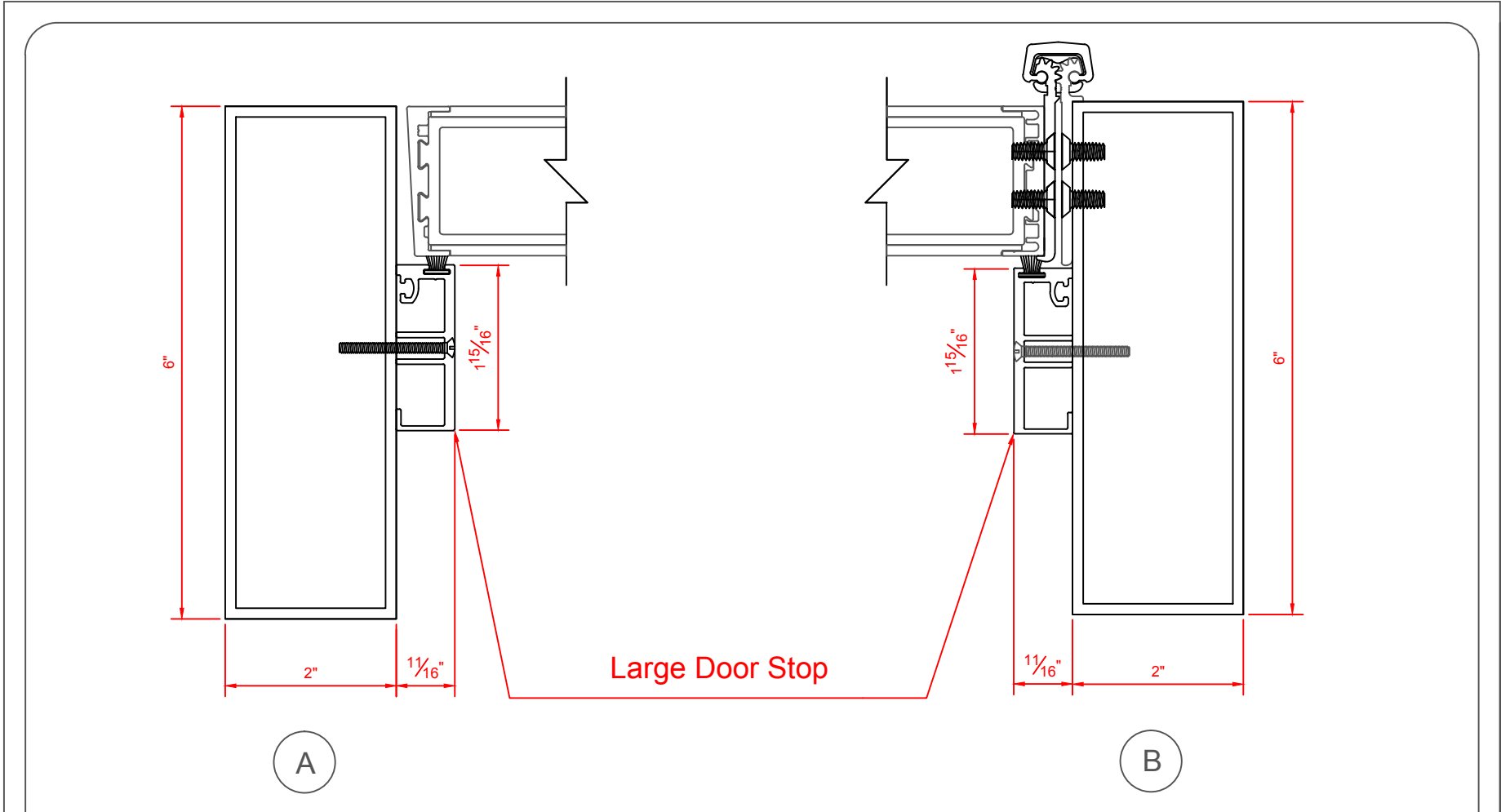
2" X 6" FRAMING SYSTEM WITH STOPS

LOW PROFILE HEAVY DUTY DOOR STOPS

VALE DOORS 2012

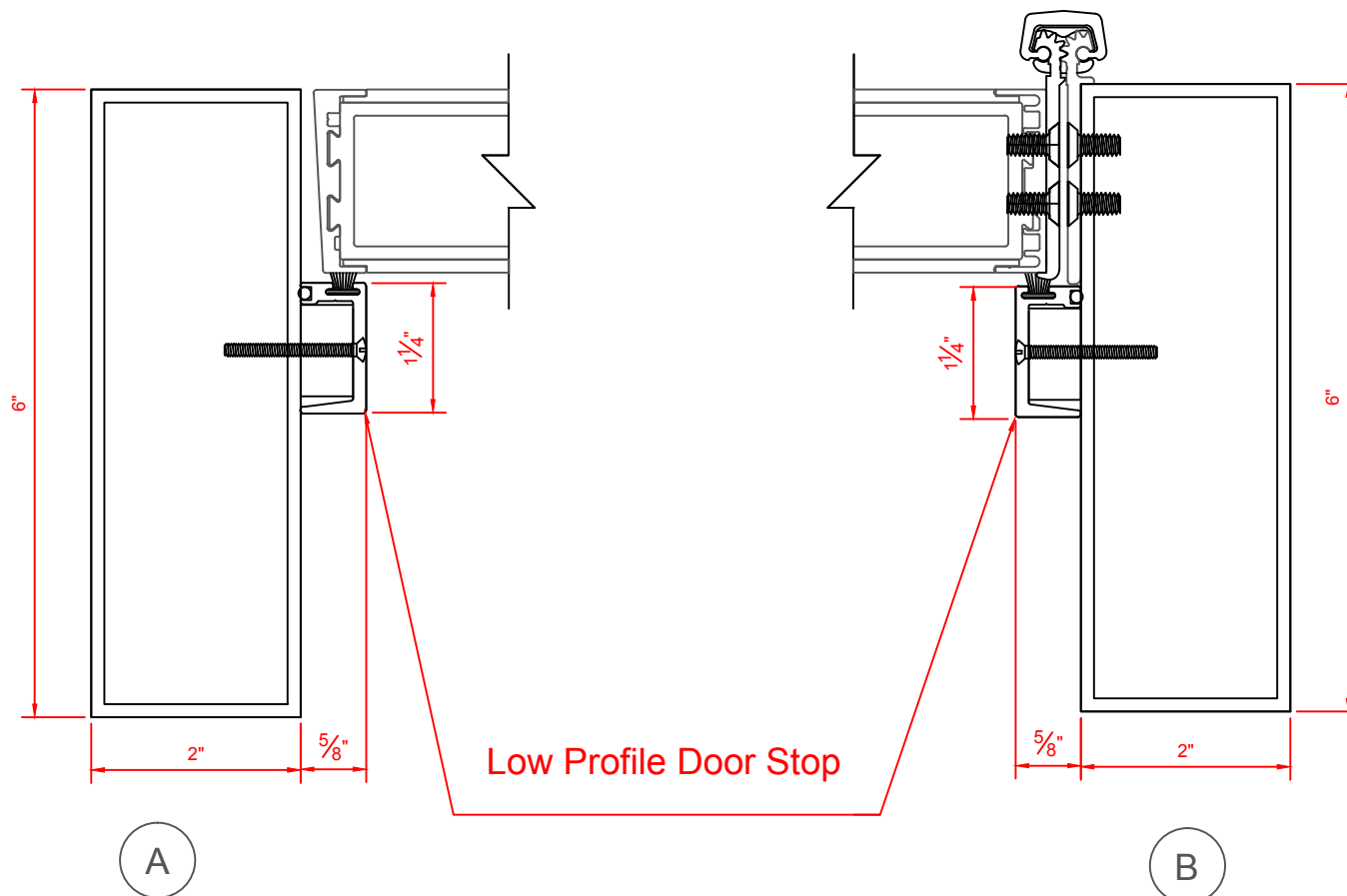
WITH SOLID ALUMINIUM REINFORCEMENT





2" X 6" FRAMING SYSTEM WITH STOPS

## LARGE PROFILE DOOR STOPS

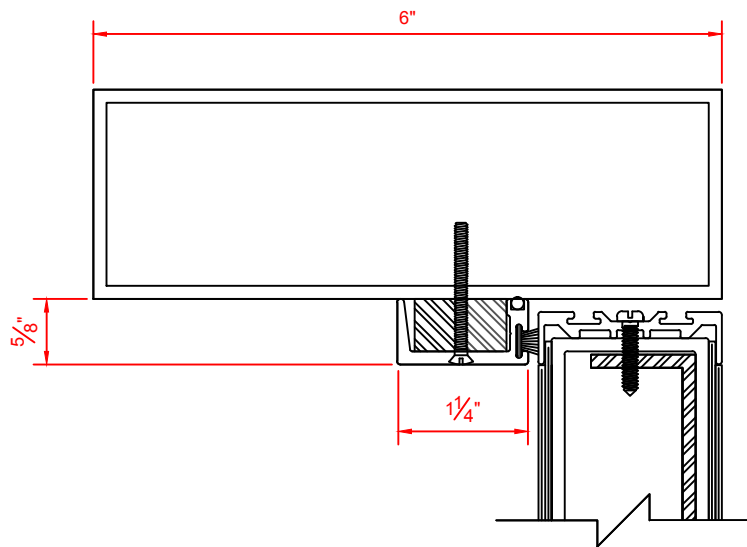


2" X 6" FRAMING SYSTEM WITH STOPS

LOW PROFILE DOOR STOPS

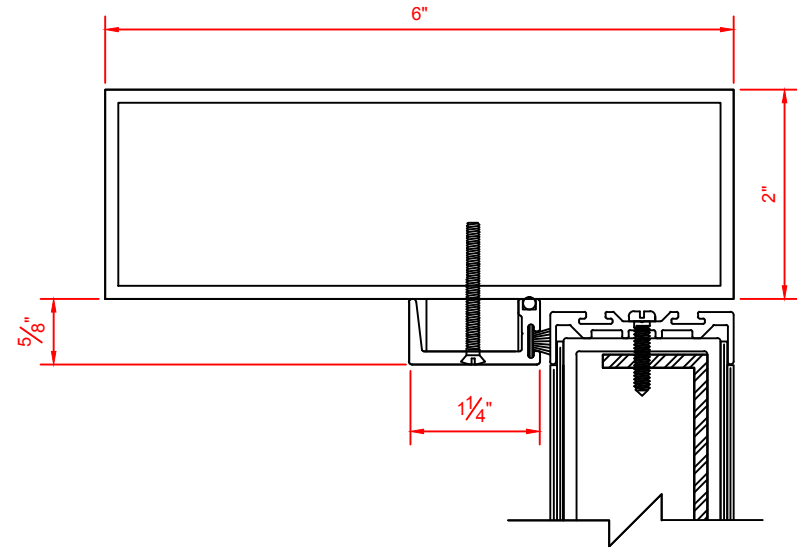
VALE DOORS 2012

Low Profile Heavy Duty  
Stop With Reinforcement



C

Low Profile Heavy Duty Stop



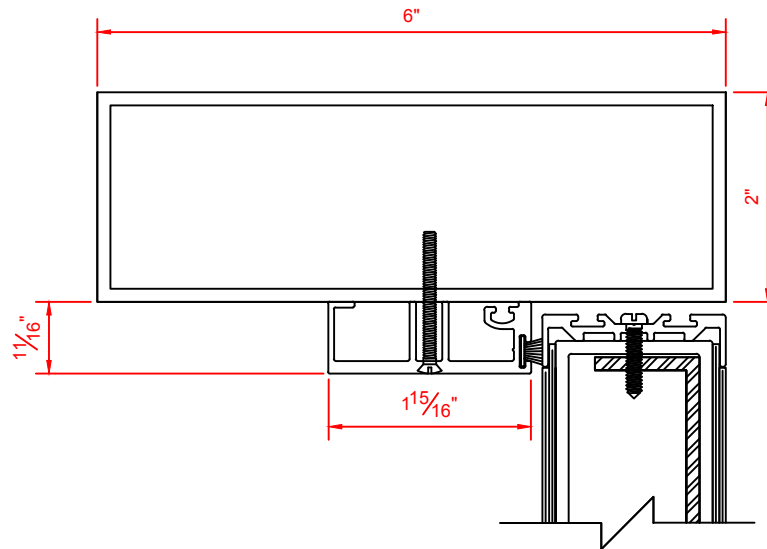
C

2" X 6" FRAMING SYSTEM WITH STOPS

LOW PROFILE DOOR STOPS

VALE DOORS 2010

### Large Profile Door Stop



C

2" X 6" FRAMING SYSTEM WITH STOPS

LARGE PROFILE DOOR STOPS

VALE DOORS 2012